



MINERAL SELECT™

Countertop Refinishing Kit

Installation Guide

Welcome to the SpreadStone™ Mineral Select™ Countertop Finishing Kit. The easiest and most economical way to add a real stone finish to existing countertops and tables!

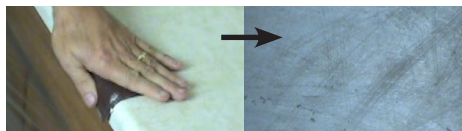
SURFACE PREPARATION

All surfaces must be clean, dry and in good repair.

Deep cracks or holes must be patched with a suitable material and made flush with the remaining surface. Patch material must dry completely before proceeding. Use the following:

Laminate	Wood	Concrete
Drywall spackle	Interior: Spackle Exterior: wood filler	Interior: Spackle Exterior: cement patch

1) If applying to laminate, the surface must be thoroughly scuffed with the enclosed sandpaper and then washed. This creates surface tooth for better bond.



2) If applying to a wood tabletop or concrete, the surface must be free of pre-existing coatings. 3) For tile countertops, apply two very thin coats of ElastoLock™ two hours apart as a bond enhancer. Allow ElastoLock™ to dry for 24 hours before proceeding. 4) Mask adjoining surfaces with painter's tape. 5) Cover nearby cabinetry and floors with plastic sheets or other suitable protection. 6) Depending on your preference, sink and faucet edges can be carefully covered with painter's tape where they meet the countertop surface – or they can be loosened and lifted off during installation of the countertop finish.

**** PLEASE NOTE:** Rollers in the kit were previously marked with identifying coloured stripes. All rollers are now **THE SAME** and can be used for **ANY STEP**.

Step 1: The Base Coat

The Base Coat is the first component of the SpreadStone™ Countertop Finishing Kit. It adheres well to laminate, wood, concrete and ElastoLock™.

MIXING

Prior to use, the Countertop Base Coat must be mixed thoroughly with a stir stick.

APPLICATION

1) Use the small brush from the kit for tight areas as well as corners, along edges, etc. Wash the brush immediately with soap and water after use since you will be using it again. 2) Apply a thin, uniform Base Coat over the remaining countertop or table surface with one of the enclosed rollers. Wash the roller with soap and water to prepare for the second application. 3) Allow the Base Coat to dry for about 30 minutes (or until dry to the touch). 4) Perform a second application of Base Coat along countertop or table edges and also spot-apply additional Base Coat to any areas which may exhibit "show through" of the underlying surface. When complete, let the surface dry for one to two hours before proceeding with application of the Stone Coating. **Wash the roller handle and tray with soap and water to prepare for the next step.**

COVERAGE

50 sq.ft. (4.6 m²) of smooth surface.

Step 2: The Stone Coat

The Stone Coating is the main component of the SpreadStone™ Mineral Select™ Countertop Finishing Kit. Its stone composition brings both strength and visual appeal to the surface.

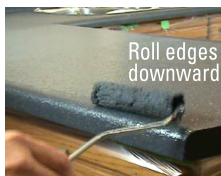
MIXING

Prior to use, the Countertop Stone Coating must be mixed thoroughly. If using a stir stick, be sure to stir from the bottom up to disperse any settled material at the bottom of the can. As an alternative, a paint-stirring drill attachment can be used for fastest and easiest results.

APPLICATION

The surface must be clean, dry, in good repair and pre-coated with the enclosed Base Coat. 1) Use the small brush from the kit to dab the Stone Coating into corners, along edges and tight areas.

2) Saturate one of the enclosed rollers in the deep portion of the paint tray. 3) Apply the Countertop Stone Coating over the entire countertop area in a continual "X" pattern for the most uniform dispersion of the coating's decorative elements. You will be able to see the stone texture in the mix as you roll it on. Push the stone around on the surface using varying roller pressure to achieve a uniformly covered surface. 4) **As you complete an area, pass the roller over the wet material a few times with normal pressure to flatten any excessive buildup. If it's on a bit too thick and a little lumpy, just roll it out until the texture is flatter and more uniform to get a uniform result.** 5) Wash the roller with soap and water and let the first coat dry for one to two hours. 6) Apply a second coat in the same manner as the first. If there are areas where you want more decorative speckle, spot-apply with more material as you



move along to even out the appearance. ****7) When the surface has dried thoroughly, sand it with the enclosed sandpaper. Sand until the surface is as smooth as you want it to be prior to application of the clear coat (clear coat is not for filling texture). ** Use a dust mask while sanding.****

HANDY TIP: an electric orbital sander is an excellent tool for making this step easier.

COVERAGE (per one-quart container)

30 - 40 sq.ft. (2.8 - 3.7 m²) of countertop. Overall coverage after two coats of Stone Coating is between 30 - 40 sq.ft. (2.8 - 3.7 m²).

Step 3: The Clear Coat

The Clear Coat is the last component of the SpreadStone™ Countertop Finishing Kit. It adds an attractive and durable semi-gloss stain resistant finish to the surface.

MIXING

Once the Stone Coating has cured for 24 hours, the enclosed clear coat can be applied as directed. Prior to use, the Countertop Clear Coat must be well stirred in a gentle manner to avoid addition of air bubbles. **DO NOT SHAKE.**

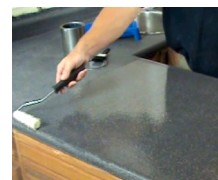
SURFACE PREPARATION

The surface must be clean, dry and sanded to your desired level of smoothness. Remove sanding dust with a vacuum or a careful sweep. Surface should then be wiped down with a clean damp cloth to remove any remaining fine dust.

APPLICATION

1) Use the small brush from the kit for tight areas as well as corners, along edges, etc. Avoid pooling of the clear coat during application.

Wash the brush immediately after use with soap and water, since



you will be using it again. 2) Apply the Clear Coat over the rest of the entire countertop or table surface with one of the enclosed rollers. Roll gently over the surface until it is fully covered. Roll over the wet clear coat a few times immediately after application and continue until

the entire surface is covered. **DO NOT OVERWORK OR DISTURB** the Clear Coat with additional roller passes as it attempts to dry. This could add air bubbles and roughen the finish. Wash the roller with soap and water after use. 3) Allow the Clear Coat to dry for about four hours. 4) Apply a second coat in the same manner as the first and allow it to cure for 24 hours before use.

COVERAGE

50 sq.ft. (4.6 m²) of smooth surface area with two coats.

PRECAUTIONS: Avoid contact with eyes and skin. Flood eyes repeatedly with potable water for 15 minutes. Wash hands after handling. Do not take internally. **KEEP OUT OF REACH OF CHILDREN.** Keep container closed. Water-based product – dispose of unused material as prescribed by law.

COMPLETION AND CLEANUP

1) After the Clear Coat has cured, all painter's tape must be removed. ***All edges where the painter's tape meets the surface finish should be scored carefully with a utility knife to ensure clean, damage-free removal.** 2) To stop water intrusion beneath sinks and other fixtures and the surface coating, a bead of clear caulking is recommended along adjoining edges.

SURFACE CARE GUIDELINES

With your new countertop or tabletop finish installed, the following guidelines should be followed to keep your surface in optimal condition.

Resuming Use:

After application of the Clear Coat and the initial 24 hour cure, your new countertop surface will be very durable. However, it will continue to cure and harden over the next seven days to become even more wear and stain resistant. Consequently, lighter than normal use is recommended for the first seven days.



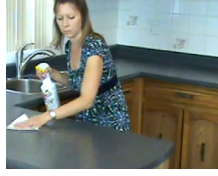
Cutting foods:

Though your new countertop is durable, cutting foods directly on the surface is not recommended. A cutting board should be used.



Hot Objects:

While your new countertop or table finish is heat resistant, prolonged contact with extremely hot pans, etc. may discolour or damage the surface. As a sensible precaution, a trivet should be used to protect your countertop's good condition.



Maintenance:

The easiest way to keep your countertop or table in good condition is to keep it clean. It should be wiped clean after use with a damp cloth or common household cleaner. Otherwise, your new surface is

basically maintenance-free.

For LIVE footage of the steps outlined here, please visit our website at www.daichcoatings.com or call 1-866-463-2424.

Thank you – and enjoy your new stone countertop or table finish!